

FARM DATA

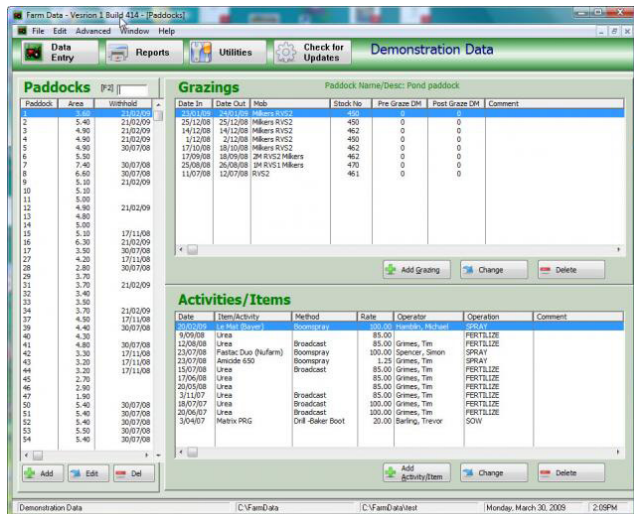
Farm Data is a farm mapping and paddock record keeping software program, developed by Warrnambool Veterinary.

Farm Data allows you to import maps from practically any source, record grazings and other things that happen in paddocks such as:

- ✓ spraying,
- ✓ fertilizing,
- ✓ harvesting, and even
- ✓ pasture cover.

You can print off maps for contractors with certain paddocks highlighted, you can print off reports for your QA programs and you can more efficiently manage the farm because records of what happened in each paddock are ready to hand.

No other mapping program is as simple to use.



The screenshot shows the 'Farm Data - Version 3 Build 418 - Paddock' window. It features several tabs: 'Data Entry', 'Reports', 'Utilities', 'Check for Updates', and 'Demonstration Data'. The 'Data Entry' tab is active, displaying a 'Paddocks' table with columns for Paddock, Area, and Withhold. Below this is a 'Grazings' table with columns for Date In, Date Out, Mob, Stock No, Pre Graze DM, and Post Graze DM. At the bottom is an 'Activities/Items' table with columns for Date, Item/Activity, Method, Rate, Operator, Operation, and Comment. The status bar at the bottom indicates 'Demonstration Data', 'C:\FarmData', 'C:\FarmData\test', and the date/time 'Monday, March 30, 2009 2:08PM'.

Phone the Farm Desk on 03 5561 7666



Warrnambool Veterinary have free fully functional demonstration discs available that allow you to use the programs free of charge for one month.

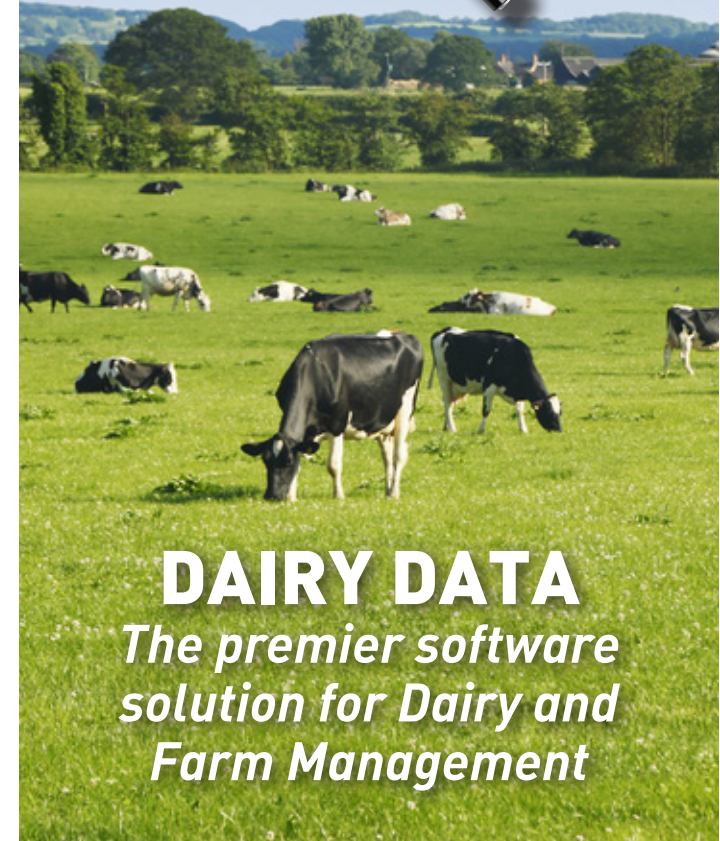
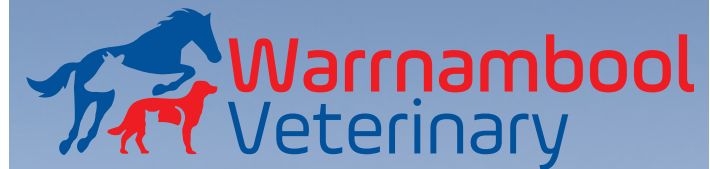
All data entered will remain intact so if you decide to purchase the software you will not lose any data already entered.

Don't forget we have a team of farm advisors on the staff as well. If your farm could run more efficiently, give us a call!

If you would like a free demonstration disc, contact Warrnambool Veterinary on 03 5561 7666 or email mail@wvc.com.au



www.wvc.com.au



Phone the Farm Desk on 03 5561 7666

DAIRY SOFTWARE

Through their industry leading work in developing dairy herd health programs and farm consultancy, Drs David Beggs and Mike Hamblin have developed a range of farm management software programs to assist dairy farmers improve their farm efficiency, production and profitability.

The range of software includes **Dairy Data**, **Farm Data** and **Farm Cash**, which together form a suite of software solutions to improve the way you manage and record herd, pasture and financial events for your farm.

A range of informative and detailed reports are easily generated from a set of pre-designed templates, which means you can quickly work out how your herd, paddocks and budgets are performing.

Inconjunction with our full **Farm Consultancy services**, these software products are indispensable for your farm management systems.



DAIRY DATA FARM CASH FARM DATA

DAIRY DATA



Dairy Data is used by hundreds of farmers to help manage their herds, many large Dairy vet clinics to provide consultancy advice to farmers, and by every Australian university that has a Veterinary School to teach herd health to students.

Having powerful analysis tools in the Veterinary version, it is used by numerous dairy industry researchers.

Dairy Data allows you to keep track of everything that happens to the stock on your farm. Everything from;

- ✓ Calvings,
- ✓ AI Matings,
- ✓ Preg test results,
- ✓ Health events,
- ✓ Cell counts and
- ✓ Herd test results;

Can be easily entered or imported into Dairy Data. Useful reports can be generated that help improve farm efficiency such as calving, dry off and pregnancy diagnosis reports are available at the click of a button.

Dairy Data uses the **ADHIS** data interchange format to import/export data and information can also be imported via csv files to or from other software programs.

Warrnambool Veterinary actively responds to the needs of the dairy industry and most recently have collaborated with the ADHIS to develop the Warrnambool Veterinary Sexed Semen Selector.

Phone the Farm Desk on 03 5561 7666

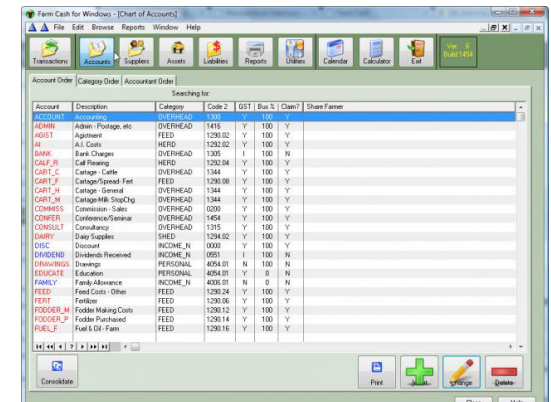
FARM CASH

Farm Cash is software designed at Warrnambool Veterinary that has been helping dairy farmers take control over their finances for more than 12 years.

Farm Cash is different from the other cashbook programs you may have heard of like MYOB or Quicken because it comes all ready and set up for dairy farmers.

As well as recording all your financial transactions and producing GST reports and other reports that help with tax, Farm Cash asks questions about the management side of your business as well.

When you sell milk, it asks for the litres, fat and protein. When you buy grain it asks how many tonnes. For other inputs it asks for tonnes and components of fertilizer, litres of fuel, kws of electricity etc. This information can be used to create benchmarking reports and increase the efficiency of your farming business.



Most Accounting programs just do tax. Farm Cash does that and more. It is a powerful tool for consultants.

DAIRY DATA FARM CASH FARM DATA